

SPECIE	S.v.	Bergamo	Brescia	Como	Cremona	Lecco	Lodi	Mantova	Milano	Monza	Pavia	Sondrio	Varese	Lombardia
Coturnice ( <i>Alectoris graeca</i> )	2002/2003	30	0	98	0	33	0	0	0	0	0	86	0	247
	2003/2004	105	133	122	0	73	0	0	0	0	0	110	3	546
	2004/2005	71	91	130	0	37	0	0	0	0	0	126	6	461
	2005/2006	89	123	148	0	86	0	0	0	0	0	147	0	593
	2006/2007	90	135	188	0	88	0	0	0	0	0	179	0	680
	2007/2008	86	127	175	0	44	0	0	0	0	0	177	3	612
	2008/2009	37	68	131	0	0	0	0	0	0	0	185	7	428
	2009/2010	26	60	38	0	0	0	0	0	0	0	99	2	225
	2010/2011	0	29	104	0	25	0	0	0	0	0	92	0	250
	2011/2012	0	32	43	0	16	0	0	0	0	0	30	0	121
	2012/2013	27	0	54	0	25	0	0	0	0	0	80	11	197
	2013/2014	52	27	78	0	35	0	0	0	0	0	91	0	283
	2014/2015	0	18	47	0	22	0	0	0	0	0	41	0	128
	2015/2016	36	36	63	0	29	0	0	0	0	0	98	0	262
	2016/2017	38	35	76	0	26	0	0	0	0	0	99	4	278
	2017/2018	39	62	71	0	64	0	0	0	0	0	106	0	342
	2018/2019	41	60	89	0	36	0	0	0	0	0	233	0	459
	2019/2020	59	104	95	0	37	0	0	0	0	0	167	0	462
	2020/2021	27	17	95	0	3	0	0	0	0	0	88	0	230
	2021/2022	26	85	102	0	33	0	0	0	0	0	101	0	347
Fagiano ( <i>Phasianus colchicus</i> )	2002/2003	22.315	31.723	7.059	17.962	7.226	7.725	12.064	32.627	0	0	2.338	13.361	154.400
	2003/2004	28.943	43.734	7.762	20.157	6.955	445	12.135	32.615	0	0	2.505	12.173	167.424
	2004/2005	29.993	41.319	7.820	16.398	7.024	7.414	11.598	29.410	0	11.573	3.529	11.611	177.689
	2005/2006	18.003	39.770	6.615	16.648	5.616	3.929	14.674	26.390	0	16.748	3.298	10.190	161.881
	2006/2007	17.656	42.605	6.739	16.421	6.160	7.540	14.393	25.143	0	15.419	3.085	10.319	165.480
	2007/2008	17.797	39.466	7.113	18.821	6.379	7.492	15.164	24.442	0	16.213	N.D.	10.946	163.833
	2008/2009	14.566	36.820	N.D.	19.371	5.612	719	13.527	24.231	0	15.450	4.196	8.764	143.256
	2009/2010	13.917	36.353	8.769	17.265	5.859	5.874	12.983	17.742	3.813	15.850	3.879	8.693	150.997
	2010/2011	11.946	34.278	5.536	16.542	5.475	6.386	12.594	13.441	3.681	16.670	2.810	7.926	137.285
	2011/2012	13.383	31.405	5.697	18.812	5.372	6.824	12.744	13.882	3.153	11.441	N.D.	8.688	131.401
	2012/2013	13.732	28.256	5.458	13.179	4.875	5.891	11.224	13.916	3.133	13.359	3.138	8.086	124.247
	2013/2014	12.100	28.462	4.999	12.670	5.601	5.539	9.619	12.014	3.379	10.270	2.534	7.494	114.681

	2014/2015	11.365	26.318	3.964	12.835	4.913	5.470	9.068	12.507	3.152	11.106	2.347	6.972	110.017
	2015/2016	11.785	26.102	4.591	12.837	4.509	5.848	9.189	11.457	2.730	10.235	2.342	4.397	106.022
	2016/2017	11.525	17.989	4.568	12.283	4.236	5.644	9.485	10.788	2.198	11.526	1.960	4.999	97.201
	2017/2018	7.506	16.153	3.952	9.131	3.678	5.265	6.914	9.518	1.560	9.575	2.365	6.421	82.038
	2018/2019	8.704	21.218	3.900	11.623	3.112	5.210	9.722	8.906	1.532	8.049	1.970	5.702	89.648
	2019/2020	8.942	18.869	3.388	10.052	3.012	4.312	8.571	8.440	1.084	6.410	1.852	5.515	80.447
	2020/2021	4.740	14.128	2.419	7.734	2.831	3.369	7.217	6.074	1.088	6.326	1.251	2.790	59.967
	2021/2022	4.426	13.730	2.272	7.833	2.382	2.502	6.119	7.473	1.064	5.437	1.599	3.397	58.234
Fagiano di monte (Tetrao tetrix)	2002/2003	114	181	47	0	75	0	0	0	0	0	192	2	611
	2003/2004	129	187	46	0	69	0	0	0	0	0	209	2	642
	2004/2005	163	172	56	0	73	0	0	0	0	0	212	5	681
	2005/2006	77	202	54	0	63	0	0	0	0	0	246	5	647
	2006/2007	47	209	50	0	66	0	0	0	0	0	283	3	658
	2007/2008	65	186	48	0	13	0	0	0	0	0	234	3	549
	2008/2009	10	118	28	0	0	0	0	0	0	0	148	4	308
	2009/2010	0	132	37	0	31	0	0	0	0	0	193	6	399
	2010/2011	29	139	43	0	37	0	0	0	0	0	170	7	425
	2011/2012	0	110	40	0	42	0	0	0	0	0	235	1	428
	2012/2013	66	0	47	0	41	0	0	0	0	0	204	6	364
	2013/2014	51	103	51	0	55	0	0	0	0	0	193	3	456
	2014/2015	27	111	54	0	32	0	0	0	0	0	204	1	429
	2015/2016	60	151	61	0	56	0	0	0	0	0	193	6	527
	2016/2017	64	94	54	0	36	0	0	0	0	0	142	2	392
	2017/2018	61	137	64	0	39	0	0	0	0	0	167	5	473
	2018/2019	26	116	49	0	28	0	0	0	0	0	154	1	374
	2019/2020	50	143	39	0	29	0	0	0	0	0	216	0	477
	2020/2021	18	124	53	0	36	0	0	0	0	0	132	1	364
	2021/2022	42	133	60	0	39	0	0	0	0	0	164	9	447
Pernice rossa (Alectoris rufa)	2002/2003	725	532	1	276	0	4	0	63	0	0	0	13	1.614
	2003/2004	1.447	525	3	277	0	3	0	63	0	0	0	26	2.344
	2004/2005	2.171	478	2	306	0	5	0	82	0	237	0	30	3.311
	2005/2006	1.650	432	2	196	0	37	0	67	0	237	0	19	2.640
	2006/2007	1.452	369	2	1.053	0	5	0	65	0	238	0	7	3.191

	<b>2007/2008</b>	1.510	566	0	455	0	134	0	149	0	238	0	22	<b>3.074</b>
	<b>2008/2009</b>	1.672	634	27	565	0	142	0	1.114	0	238	0	18	<b>4.410</b>
	<b>2009/2010</b>	2.059	763	68	740	0	372	0	1.115	333	440	0	41	<b>5.931</b>
	<b>2010/2011</b>	1.523	859	80	762	0	116	0	865	103	355	0	34	<b>4.697</b>
	<b>2011/2012</b>	2.095	865	65	988	1	108	0	1.213	295	275	0	108	<b>6.013</b>
	<b>2012/2013</b>	1.356	700	86	649	3	100	0	1.738	48	174	0	68	<b>4.922</b>
	<b>2013/2014</b>	258	788	6	453	12	93	0	1.676	91	111	0	0	<b>3.488</b>
	<b>2014/2015</b>	249	829	5	598	0	72	0	111	23	229	0	20	<b>2.136</b>
	<b>2015/2016</b>	224	720	2	591	3	71	0	78	8	217	0	1	<b>1.915</b>
	<b>2016/2017</b>	174	562	14	668	0	68	0	77	3	270	0	14	<b>1.850</b>
	<b>2017/2018</b>	203	401	14	392	7	103	15	56	9	162	0	18	<b>1.380</b>
	<b>2018/2019</b>	137	487	6	484	5	51	30	43	6	127	0	10	<b>1.386</b>
	<b>2019/2020</b>	204	508	4	414	2	57	35	48	6	109	0	69	<b>1.456</b>
	<b>2020/2021</b>	115	315	0	247	10	28	14	33	1	103	0	13	<b>879</b>
	<b>2021/2022</b>	159	367	1	162	12	9	6	39	5	84	0	38	<b>882</b>
<b>Pernice bianca (Lagopus muta)</b>	<b>2002/2003</b>	0	44	0	0	0	0	0	0	0	0	137	0	<b>181</b>
	<b>2003/2004</b>	5	26	0	0	0	0	0	0	0	0	67	0	<b>98</b>
	<b>2004/2005</b>	22	25	0	0	0	0	0	0	0	0	95	0	<b>142</b>
	<b>2005/2006</b>	0	36	0	0	0	0	0	0	0	0	131	0	<b>167</b>
	<b>2006/2007</b>	0	40	0	0	0	0	0	0	0	0	150	0	<b>190</b>
	<b>2007/2008</b>	0	27	0	0	0	0	0	0	0	0	95	0	<b>122</b>
	<b>2008/2009</b>	0	25	0	0	0	0	0	0	0	0	87	0	<b>112</b>
	<b>2009/2010</b>	0	15	0	0	0	0	0	0	0	0	80	0	<b>95</b>
	<b>2010/2011</b>	0	12	0	0	0	0	0	0	0	0	47	0	<b>59</b>
	<b>2011/2012</b>	0	12	0	0	0	0	0	0	0	0	82	0	<b>94</b>
	<b>2012/2013</b>	0	0	0	0	0	0	0	0	0	0	29	0	<b>29</b>
	<b>2013/2014</b>	0	14	0	0	0	0	0	0	0	0	54	0	<b>68</b>
	<b>2014/2015</b>	0	12	0	0	0	0	0	0	0	0	49	0	<b>61</b>
	<b>2015/2016</b>	0	5	0	0	0	0	0	0	0	0	54	0	<b>59</b>
	<b>2016/2017</b>	5	12	0	0	0	0	0	0	0	0	68	0	<b>85</b>
	<b>2017/2018</b>	1	4	0	0	0	0	0	0	0	0	16	0	<b>21</b>
	<b>2018/2019</b>	0	28	0	0	0	0	0	0	0	0	42	0	<b>70</b>
	<b>2019/2020</b>	2	13	0	0	0	0	0	0	0	0	52	0	<b>67</b>

	2020/2021	0	9	0	0	0	0	0	0	0	0	47	0	56
	2021/2022	0	0	0	0	0	0	0	0	0	0	82	0	82
Starna (Perdix perdix)	2002/2003	4.555	4.573	1.348	641	674	202	4.115	2.481	0	0	124	0	18.713
	2003/2004	4.118	4.590	1.260	832	779	0	915	2.426	0	0	0	398	15.318
	2004/2005	3.870	3.714	1.386	693	743	163	849	2.872	0	247	148	559	15.244
	2005/2006	3.537	3.583	1.317	712	733	151	934	3.408	0	247	206	462	15.290
	2006/2007	3.969	3.773	1.212	633	682	183	1.010	3.628	0	260	138	573	16.061
	2007/2008	3.909	3.736	1.247	620	598	173	950	3.755	0	261	0	500	15.749
	2008/2009	3.014	3.444	1.630	543	676	70	1.003	3.769	0	270	457	877	15.753
	2009/2010	2.875	5.181	1.530	800	551	130	795	2.768	924	1.350	516	582	18.002
	2010/2011	3.897	3.760	1.431	648	562	122	866	1.659	747	1.050	348	577	15.667
	2011/2012	3.140	6.174	1.349	1.068	606	109	879	1.092	669	133	0	955	16.174
	2012/2013	2.730	5.292	1.358	780	637	239	548	1.709	594	159	271	613	14.930
	2013/2014	2.924	3.776	1.239	722	683	227	627	1.469	615	89	191	633	13.195
	2014/2015	2.815	3.349	936	647	501	276	650	1.310	496	134	248	591	11.953
	2015/2016	3.251	3.750	1.258	670	550	262	593	1.134	612	106	177	298	12.661
	2016/2017	3.015	2.450	1.282	657	446	220	549	1.453	409	116	191	618	11.406
	2017/2018	3.011	2.609	1.104	545	468	236	265	1.410	431	51	173	362	10.665
	2018/2019	2.252	3.758	955	534	309	145	481	1.180	287	71	54	179	10.205
	2019/2020	2.409	3.358	801	517	367	144	562	991	160	57	69	235	9.670
	2020/2021	1.767	2.556	797	275	454	124	409	561	182	38	83	128	7.374
	2021/2022	1.235	2.630	517	469	251	161	547	770	238	41	95	107	7.061
Camoscio alpino (Rupicapra rupicapra)	2002/2003	316	13	0	0	128	0	0	0	0	0	476	11	944
	2003/2004	459	18	0	0	119	0	0	0	0	0	472	13	1.081
	2004/2005	444	12	1	0	136	0	0	0	0	0	540	14	1.147
	2005/2006	378	10	4	0	156	0	0	0	0	0	559	11	1.118
	2006/2007	404	23	2	0	135	0	0	0	0	0	649	12	1.225
	2007/2008	462	16	1	0	135	0	0	0	0	0	646	8	1.268
	2008/2009	412	30	2	0	156	0	0	0	0	0	640	10	1.250
	2009/2010	395	28	2	0	186	0	0	0	0	0	586	5	1.202
	2010/2011	417	39	2	0	187	0	0	0	0	0	565	8	1.218
	2011/2012	506	41	12	0	206	0	0	0	0	0	599	9	1.373
	2012/2013	466	0	16	0	204	0	0	0	0	0	0	5	691

	2013/2014	476	58	17	0	217	0	0	0	0	0	543	6	1.317
	2014/2015	327	55	0	0	187	0	0	0	0	0	570	6	1.145
	2015/2016	384	65	21	0	218	0	0	0	0	0	519	7	1.214
	2016/2017	417	77	20	0	211	0	0	0	0	0	443	13	1.181
	2017/2018	348	141	67	0	209	0	0	0	0	0	509	11	1.285
	2018/2019	359	123	34	0	260	0	0	0	0	0	542	8	1.326
	2019/2020	372	135	20	0	265	0	0	0	0	0	497	20	1.309
	2020/2021	276	104	8	0	160	0	0	0	0	0	404	10	962
	2021/2022	299	113	52	0	225	0	0	0	0	0	404	14	1.107
Capriolo (Capreolus capreolus)	2002/2003	528	121	0	0	290	0	0	0	0	0	243	6	1.188
	2003/2004	584	141	65	0	281	0	0	0	0	0	264	15	1.350
	2004/2005	512	70	56	0	252	0	0	0	0	0	199	34	1.123
	2005/2006	360	80	64	0	255	0	0	0	0	0	173	48	980
	2006/2007	358	75	58	0	204	0	0	0	0	0	181	47	923
	2007/2008	441	68	80	0	136	0	0	0	0	0	169	50	944
	2008/2009	377	68	68	0	130	0	0	0	0	0	158	51	852
	2009/2010	276	72	69	0	120	0	0	0	0	0	110	65	712
	2010/2011	342	75	61	0	111	0	0	0	0	39	174	67	869
	2011/2012	350	68	92	0	110	0	0	0	0	99	200	83	1.002
	2012/2013	382	30	134	0	113	0	0	0	0	116	0	98	873
	2013/2014	362	38	131	0	127	0	0	0	0	307	220	85	1.270
	2014/2015	313	46	115	0	114	0	0	0	0	183	205	0	976
	2015/2016	339	71	94	0	106	0	0	0	0	345	249	97	1.301
	2016/2017	398	55	88	0	96	0	0	0	0	395	194	181	1.407
	2017/2018	321	75	83	0	81	0	0	0	0	416	242	113	1.331
	2018/2019	285	61	75	0	69	0	0	0	0	491	263	97	1.341
	2019/2020	270	56	79	0	67	0	0	0	0	378	234	104	1.188
	2020/2021	201	89	67	0	65	0	0	0	0	438	188	101	1.149
	2021/2022	197	109	46	0	46	0	0	0	0	564	175	156	1.293
Cervo (Cervus elaphus)	2002/2003	17	114	117	0	0	0	0	0	0	0	360	6	614
	2003/2004	21	124	117	0	0	0	0	0	0	0	425	13	700
	2004/2005	19	141	147	0	0	0	0	0	0	0	427	25	759
	2005/2006	12	153	147	0	0	0	0	0	0	0	436	35	783

	2006/2007	18	167	203	0	0	0	0	0	0	0	468	46	902
	2007/2008	19	155	303	0	0	0	0	0	0	0	550	55	1.082
	2008/2009	22	184	375	0	0	0	0	0	0	0	563	63	1.207
	2009/2010	20	202	424	0	7	0	0	0	0	0	372	86	1.111
	2010/2011	16	226	517	0	6	0	0	0	0	0	584	86	1.435
	2011/2012	26	126	501	0	9	0	0	0	0	0	542	106	1.310
	2012/2013	40	N.D.	512	0	18	0	0	0	0	0	0	107	677
	2013/2014	51	190	504	0	21	0	0	0	0	0	665	103	1.534
	2014/2015	74	169	446	0	26	0	0	0	0	0	671	116	1.502
	2015/2016	81	204	490	0	28	0	0	0	0	0	646	122	1.571
	2016/2017	95	174	445	0	39	0	0	0	0	0	748	74	1.575
	2017/2018	90	242	505	0	38	0	0	0	0	0	842	130	1.847
	2018/2019	110	259	533	0	39	0	0	0	0	0	1.053	150	2.144
	2019/2020	157	230	470	0	50	0	0	0	0	0	1.111	162	2.180
	2020/2021	157	223	393	0	26	0	0	0	0	0	914	75	1.788
	2021/2022	200	299	388	0	87	0	0	0	0	0	1.192	146	2.312
Cinghiale (Sus scrofa)	2002/2003	235	239	586	0	10	0	0	0	0	280	0	801	2.151
	2003/2004	329	281	525	0	13	0	0	0	0	328	0	787	2.263
	2004/2005	271	217	637	0	8	0	0	0	0	358	0	636	2.127
	2005/2006	233	338	1.107	0	19	0	0	0	0	328	1	422	2.448
	2006/2007	269	403	800	0	6	0	0	0	0	248	0	560	2.286
	2007/2008	301	483	1.212	0	18	0	0	0	0	629	0	713	3.356
	2008/2009	278	566	1.738	0	12	0	0	0	0	570	0	766	3.930
	2009/2010	237	445	1.177	0	25	0	0	0	0	1.020	0	657	3.561
	2010/2011	347	531	1.353	0	19	0	0	0	0	1.390	0	866	4.506
	2011/2012	570	538	1.523	0	11	0	0	0	0	684	0	1.111	4.437
	2012/2013	523	752	1.455	0	44	0	0	0	0	1.549	0	838	5.161
	2013/2014	326	285	1.307	0	14	0	0	0	0	669	0	450	3.051
	2014/2015	361	324	1.001	0	7	0	0	0	0	677	0	752	3.122
	2015/2016	412	355	1.119	0	18	0	0	0	0	635	0	670	3.209
	2016/2017	572	325	1.010	0	44	0	0	0	0	833	23	466	3.273
	2017/2018	401	563	1.459	0	152	0	0	0	0	694	45	977	4.291
	2018/2019	551	481	1.556	0	243	0	0	0	0	460	8	906	4.205

[illegible]

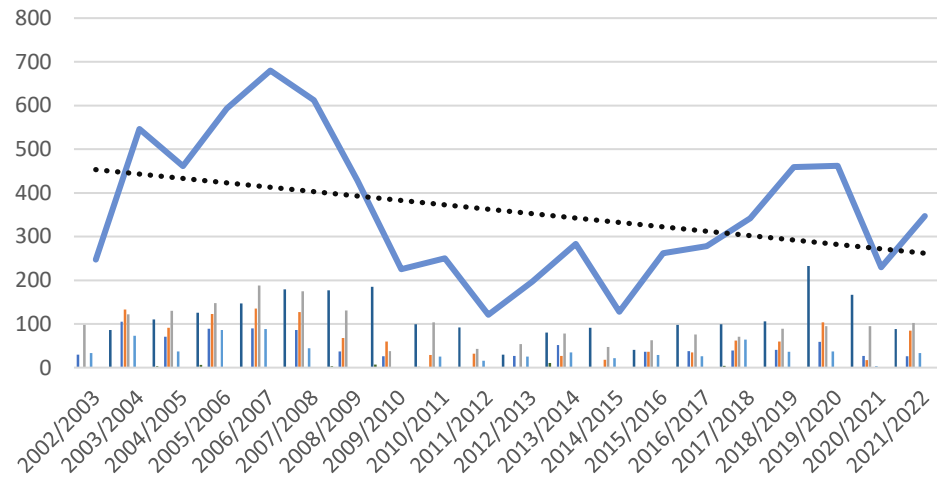
	2012/2013	0	0	0	0	0	0	0	0	0	0	0	0
	2013/2014	0	0	0	0	0	0	0	0	0	0	0	0
	2014/2015	0	0	0	0	0	0	0	0	0	0	0	0
	2015/2016	0	0	0	0	0	0	0	0	0	0	0	0
	2016/2017	0	0	0	0	0	0	0	0	0	0	0	0
	2017/2018	0	0	0	0	0	0	0	0	0	0	0	0
	2018/2019	0	0	0	0	0	0	0	0	0	0	0	0
	2019/2020	0	0	0	0	0	0	0	0	0	0	0	0
	2020/2021	0	0	0	0	0	0	0	0	0	0	0	0
	2021/2022	0	0	0	0	0	0	0	0	0	0	0	0
Lepre bianca ( <i>Lepus timidus</i> )	2002/2003	9	71	1	0	0	0	0	0	0	0	64	145
	2003/2004	3	65	1	0	0	0	0	0	0	0	42	111
	2004/2005	8	51	4	0	0	0	0	0	0	0	61	124
	2005/2006	0	62	3	0	0	0	0	0	0	0	83	148
	2006/2007	0	69	0	0	0	0	0	0	0	0	77	146
	2007/2008	0	64	2	0	0	0	0	0	0	0	69	135
	2008/2009	0	59	1	0	0	0	0	0	0	0	61	121
	2009/2010	0	55	4	0	0	0	0	0	0	0	60	119
	2010/2011	0	42	0	0	0	0	0	0	0	0	46	88
	2011/2012	0	54	0	0	0	0	0	0	0	0	80	134
	2012/2013	0	0	0	0	0	0	0	0	0	0	56	56
	2013/2014	0	53	1	0	0	0	0	0	0	0	61	115
	2014/2015	0	58	1	0	0	0	0	0	0	0	67	126
	2015/2016	0	62	0	0	0	0	0	0	0	0	77	139
	2016/2017	0	40	3	0	0	0	0	0	0	0	63	106
	2017/2018	0	38	0	0	0	0	0	0	0	0	50	88
	2018/2019	0	42	0	0	0	0	0	0	0	0	89	131
	2019/2020	0	49	0	0	0	0	0	0	0	0	61	110
	2020/2021	0	24	0	0	0	0	0	0	0	0	42	66
	2021/2022	0	41	3	0	0	0	0	0	0	0	50	94
Lepre comune ( <i>Lepus europaeus</i> )	2002/2003	2.114	1.385	515	5.335	570	1.191	10.610	2.211	0	0	200	24.730
	2003/2004	2.565	1.331	443	4.524	539	60	9.561	1.932	0	0	230	21.667
	2004/2005	2.493	989	431	4.203	457	1.580	9.561	1.722	0	1.639	199	23.714



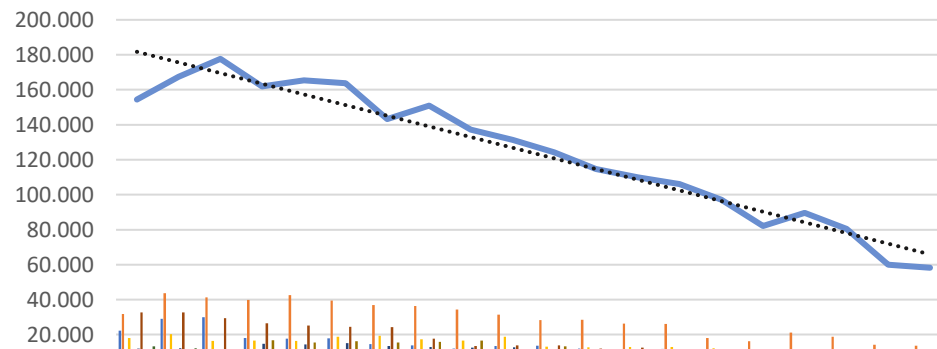
	2005/2006	1.895	1.225	463	4.126	578	604	10.287	2.015	0	2.655	246	445	24.539
	2006/2007	1.717	1.206	517	5.489	490	1.386	11.442	1.915	0	2.429	226	504	27.321
	2007/2008	2.219	1.223	431	5.945	464	1.528	13.142	1.990	0	2.589	244	472	30.247
	2008/2009	1.595	1.218	310	5.945	429	459	12.704	1.738	0	2.320	246	369	27.333
	2009/2010	1.724	1.214	401	6.815	462	1.555	14.268	1.459	311	3.080	228	251	31.768
	2010/2011	1.954	1.258	449	6.828	485	1.533	14.523	1.326	208	2.785	285	470	32.104
	2011/2012	1.659	1.391	403	7.524	385	1.342	14.398	982	191	1.994	303	301	30.873
	2012/2013	1.903	N.D.	422	5.637	446	1.321	13.113	991	211	1.490	312	504	26.350
	2013/2014	1.763	5.288	445	4.929	431	1.247	12.688	872	199	1.607	355	330	30.154
	2014/2015	1.757	5.881	436	4.256	425	972	11.107	664	147	1.075	318	292	27.330
	2015/2016	1.973	5.669	0	3.680	419	896	11.539	606	146	648	339	184	26.099
	2016/2017	2.150	3.861	370	4.083	367	1.010	12.587	625	105	1.740	286	250	27.434
	2017/2018	1.580	5.223	335	4.789	394	995	12.992	651	185	1.365	258	295	29.062
	2018/2019	1.380	4.708	308	4.451	346	869	13.312	504	143	1.304	258	210	27.793
	2019/2020	1.570	4.447	339	4.131	341	650	12.505	572	120	1.042	288	190	26.195
	2020/2021	1.316	3.672	256	3.036	296	547	10.308	399	125	993	183	162	21.293
	2021/2022	1.044	4.111	241	2.801	291	452	10.105	445	100	956	276	181	21.003
Muflone (Ovis musimon)	2002/2003	0	11	19	0	8	0	0	0	0	0	0	0	38
	2003/2004	3	9	11	0	6	0	0	0	0	0	0	19	48
	2004/2005	0	10	23	0	8	0	0	0	0	0	0	20	61
	2005/2006	0	13	13	0	21	0	0	0	0	0	0	25	72
	2006/2007	0	15	14	0	6	0	0	0	0	0	0	33	68
	2007/2008	0	15	19	0	8	0	0	0	0	0	0	34	76
	2008/2009	0	17	13	0	11	0	0	0	0	0	0	30	71
	2009/2010	16	36	23	0	6	0	0	0	0	0	0	49	130
	2010/2011	38	26	0	0	14	0	0	0	0	0	0	56	134
	2011/2012	11	26	61	0	11	0	0	0	0	0	0	59	168
	2012/2013	22	0	105	0	14	0	0	0	0	0	0	48	189
	2013/2014	21	25	100	0	15	0	0	0	0	0	0	52	213
	2014/2015	26	36	97	0	20	0	0	0	0	0	0	43	222
	2015/2016	18	37	77	0	16	0	0	0	0	0	0	62	210
	2016/2017	18	32	74	0	21	0	0	0	0	0	0	46	191
	2017/2018	32	53	73	0	13	0	0	0	0	0	0	67	238

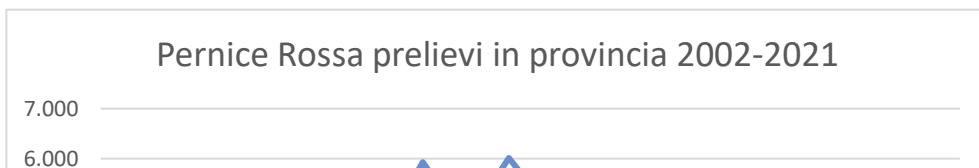
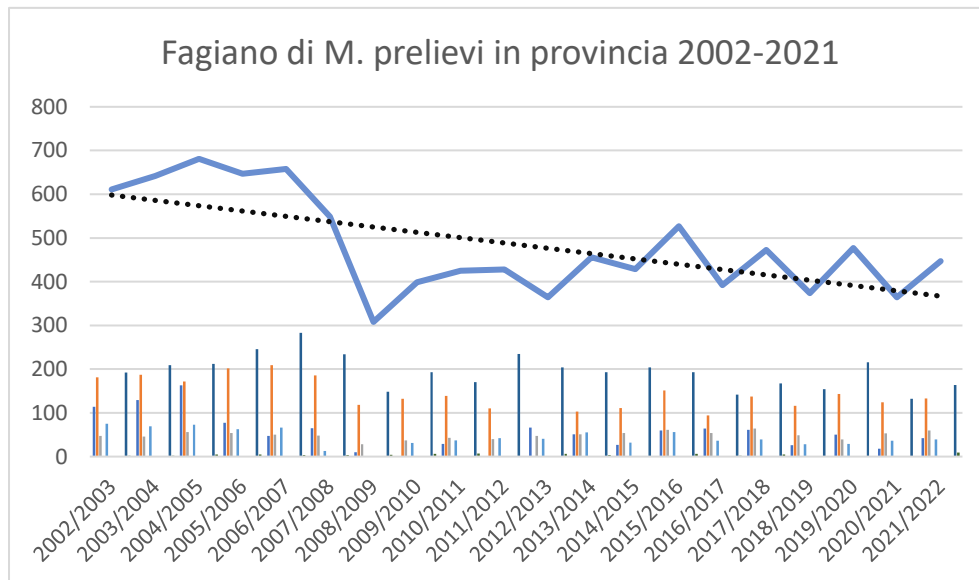
Volpe ( <i>Vulpes vulpes</i> )	2018/2019	28	63	95	0	15	0	0	0	0	0	0	65	266
	2019/2020	29	62	86	0	11	0	0	0	0	0	0	65	253
	2020/2021	26	38	71	0	11	0	0	0	0	0	0	41	187
	2021/2022	29	75	54	0	1	0	0	0	0	0	0	51	210
	2002/2003	657	445	135	95	88	64	49	178	0	0	226	438	2.375
	2003/2004	773	451	148	110	82	1	42	120	0	0	0	466	2.193
	2004/2005	720	344	146	54	98	164	41	149	0	29	189	435	2.369
	2005/2006	612	408	112	108	49	33	62	206	0	81	143	371	2.185
	2006/2007	734	420	192	64	63	115	52	164	0	62	145	478	2.489
	2007/2008	933	506	279	84	73	141	92	194	0	79	0	433	2.814
	2008/2009	944	482	252	54	101	17	80	287	0	79	0	396	2.692
	2009/2010	911	427	247	115	98	108	71	165	56	180	205	398	2.981
	2010/2011	953	284	181	210	80	252	87	296	50	163	116	543	3.215
	2011/2012	970	350	210	98	99	161	66	372	124	118	0	507	3.075
	2012/2013	952	433	188	53	126	170	73	346	105	117	0	405	2.968
	2013/2014	600	329	153	92	66	165	270	407	71	108	0	408	2.669
	2014/2015	524	298	193	95	70	75	212	353	60	111	52	463	2.506
	2015/2016	632	238	183	58	99	59	158	294	48	107	71	158	2.105
	2016/2017	597	215	134	45	87	29	170	264	39	97	53	260	1.990
	2017/2018	443	270	189	44	90	30	254	250	54	79	92	275	2.070
	2018/2019	402	329	171	49	88	51	177	249	33	81	65	248	1.943
	2019/2020	424	257	153	119	94	95	299	313	61	66	43	276	2.200
	2020/2021	366	142	125	82	54	65	257	201	31	67	46	116	1.552
	2021/2022	380	225	175	96	49	56	324	263	28	43	68	122	1.829

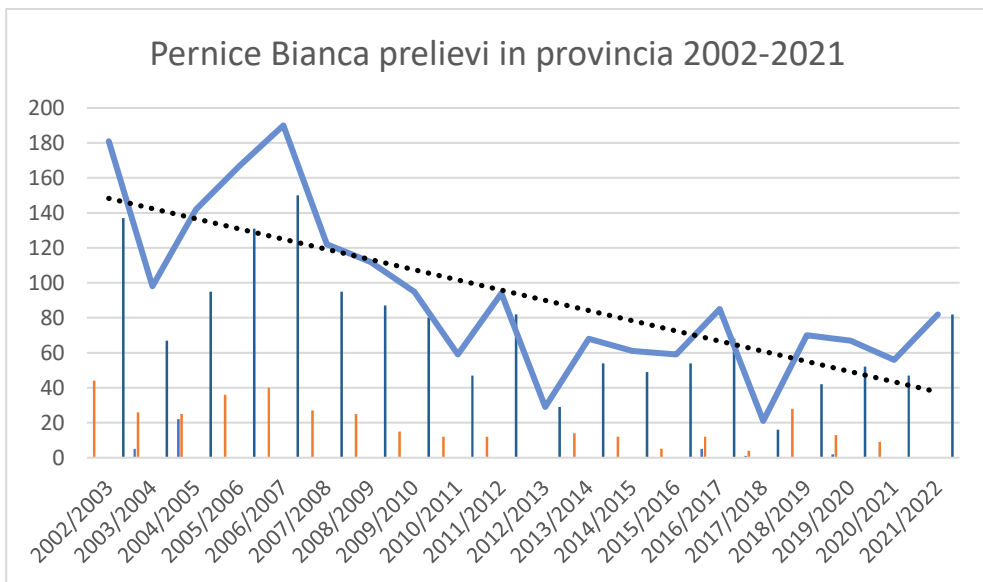
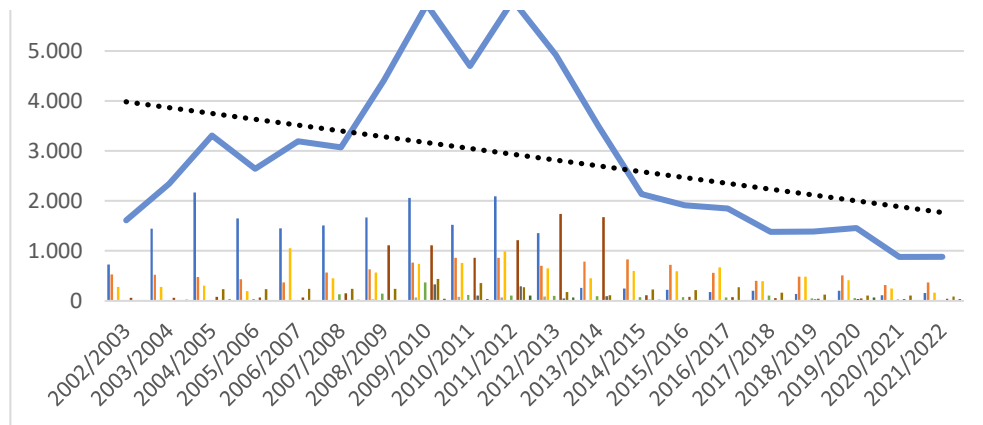
Coturnice prelievi in provincia 2002-2021



Fagiano prelievi in provincia 2002-2021







Starna prelievi in provincia 2002-2021

